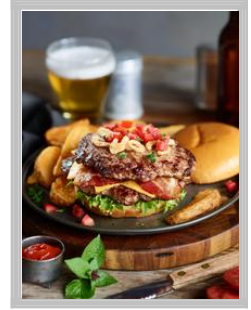




## 00070247404145 - Smithfield Black Angus Ground Beef Patties, Silver Medal, 20/8 oz, 10 lb, Frozen

All Smithfield brands are driven by the love of meat, ours, yours and, of course, your customers. That's why our offerings are so vast; because we all need our pork and specialty prepared meats our way, no one offers more. Smithfield Culinary offers everything you need to build your menu, from innovative culinary insights and ideas that help create head turning menu ideas. Smithfield has set sustainability goals because we believe we can build a more sustainable business and contribute to a better future.



Brand: Smithfield

## Nutrition Facts

27 servings per container

Serving size 1 patty (170g)

Amount per serving

**Calories 540**

% Daily Value\*

**Total Fat** 46g **71%**

Saturated Fat 19g **95%**

*Trans* Fat 0g

Polyunsaturated Fat 1g

Monounsaturated Fat 16g

**Cholesterol** 120mg **41%**

**Sodium** 85mg **4%**

**Total Carbohydrate** 0g **0%**

Dietary Fiber 0g **0%**

Total Sugars 0g

Includes 0g Added Sugars

**Protein** 28g **56%**

Vitamin D 0mcg 0% • Calcium 20mg 2%

Iron 3.6mg 20% • Potassium 440mg 13%

Vitamin A 0IU 0%

Vitamin C 0mg 0%

\* The % Daily Value (DV) tells you how much a nutrient in a serving of food contributes to a daily diet. 2,000 calories a day is used for general nutrition advice.

### Ingredients

Beef

### Case Specifications

GTIN	00070247404145	Case Gross Weight	10.65 LB
UPC		Case Net Weight	10 LB
Pack Size	1/10 LB	Case L,W,H	15.50 IN, 10.06 IN, 4.88 IN
Shelf Life	270 Days	Cube	0.44 CF
Tie x High	10 x 12		

### Preparation and Cooking

Cook Raw Patties from frozen: 4oz.-5.33 oz.-6.0oz.-8.0oz. Flat Top Grill/Charbroiler/Convection Oven set at 350.F. Cook 10 to 15 minutes.

### Serving Suggestions

Serve as hamburgers, Salisbury steak or beef patty melt.

### Product Features and Benefits

For a rich flavor and exceptional quality, look no farther than Black Angus Beef Patties. We grind 100% Black Angus Beef through a 1/8-inch grind before crafting our patties.

### Packaging and Storage

Store and use per package instructions.

### Product Images



SAP Desc: BF,SFD,SM,GRD,BLKANG,10#,20/8Z,PTY